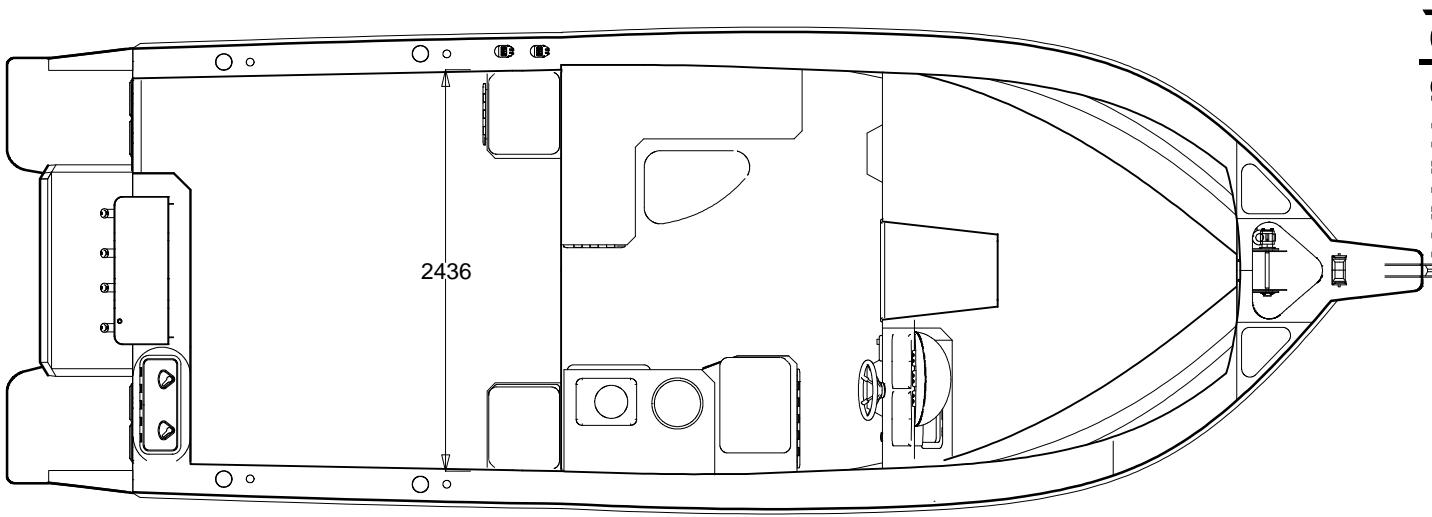
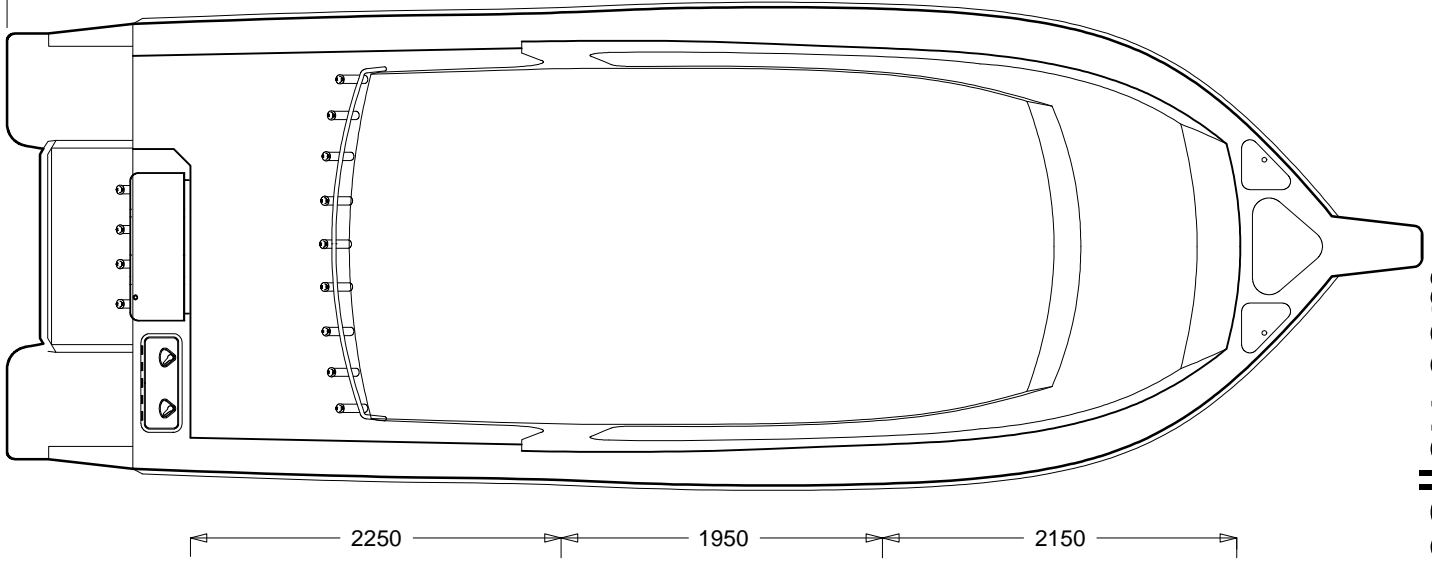
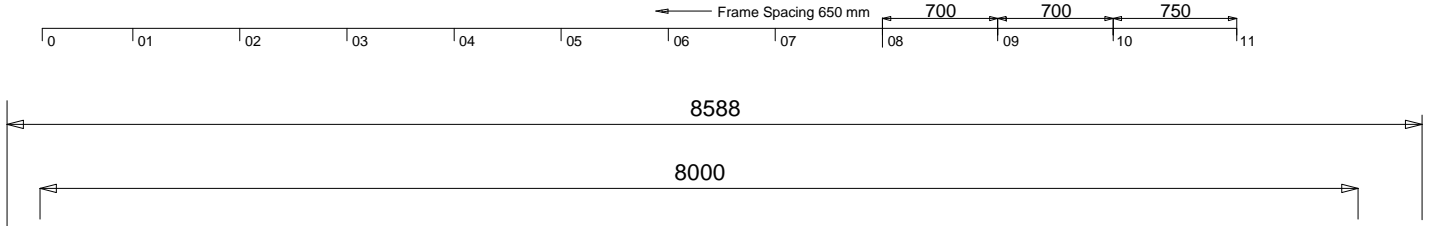
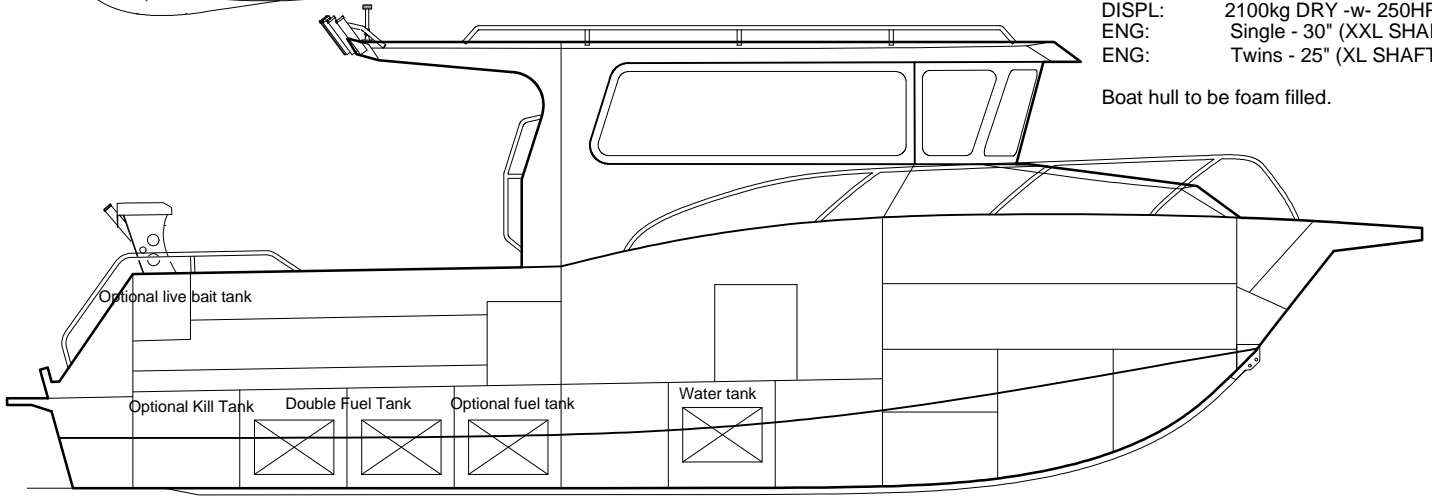
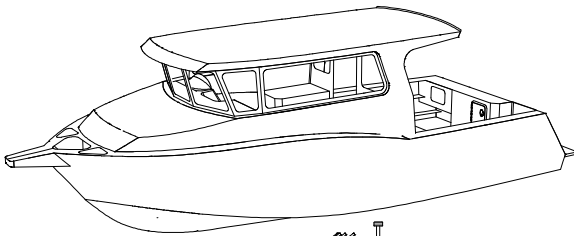


8m HARD TOP

PRINCIPAL PARTICULARS

LOA: 8.6 m (Hull Only)
 LOH: 8 m (Hull Only)
 BEAM: 2.95m
 DEPTH: 1.66m
 DRAFT: 0.38m (HULL)
 D/RISE: 15.6° @ TRAN.
 DISPL: 2100kg DRY -w- 250HP
 ENG: Single - 30" (XXL SHAFT)
 ENG: Twins - 25" (XL SHAFT)

Boat hull to be foam filled.



This drawing is the property of Plate Alloy Australia - 12-14 Elma Road, Cheltenham, Victoria, 3192, Australia. - Phone: (+613) 9555 6399 Fax: (+613) 9555 6499

www.platealloy.com

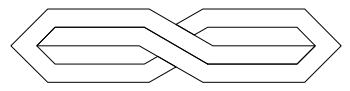


PLATE ALLOY

Note: Layout can be customised by owner
 Owner Advised to provide sun protection

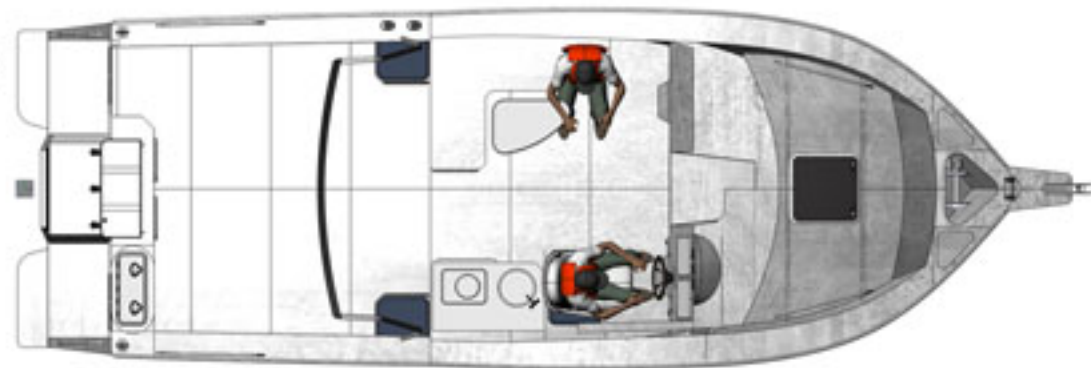
ACTUAL KIT MIGHT DIFFER FROM PICTURES SHOWN

8m Hard Top-FS



PLATE ALLOY

www.platealloy.com



8m Hard Top-FS



PLATE ALLOY

www.platealloy.com

